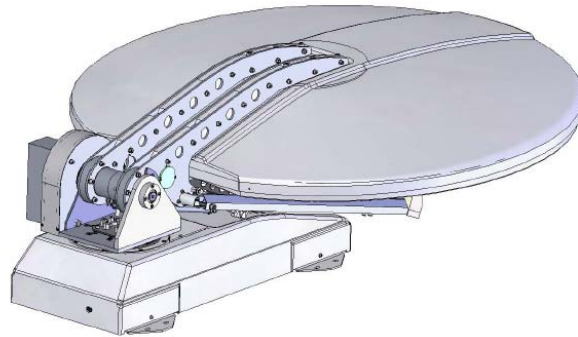




## UNITRONIX Pty Ltd

PO Box 486, Morisset NSW 2264  
NSW: Tel: 61 2 4977 3511 Fax: 61 2 4977 3522  
WA: Tel: 61 8 9455 2424 Fax: 61 8 9455 2458  
unitsyd@unitronix.com.au www.unitronix.com.au



## VM120 Antenna Installation Instructions

Tel : +44 (0)1525 721118 : Fax: +44 (0)1525 719734 : Email : [info@holkirk.com](mailto:info@holkirk.com)



---

## TABLE OF CONTENTS

1.	<b>Overview</b>	4
2.	<b>Installation and Set-up</b>	4
3.	<b>Controller Installation</b>	5
4.	<b>Maintenance</b>	5
5.	<b>Spares And Replacement Parts</b>	5
6.	<b>Manual Over Ride</b>	6
7.	<b>Overall Dimensions</b>	8
8.	<b>Mounting Bracket Positions</b>	9
9.	<b>Addendum 1 – Idirect Router Integration</b>	11
10.	<b>Addendum 2 - i-Point Fault Finding</b>	17



## Warranty

### LIMITED TWELVE (12) MONTH WARRANTY

This Holkirk Communications Ltd equipment is warranted to be free from defects in material and workmanship under normal use and service. Holkirk Communications Ltd shall repair or replace defective equipment, at no charge, or at its option, refund the purchase price, if the equipment is returned to Holkirk Communications Ltd not more than twelve (12) months after shipment. Removal or reinstallation of equipment and its transportation shall not be at cost of Holkirk Communications Ltd except Holkirk Communications Ltd shall return repaired or replaced equipment freight prepaid.

This Warranty shall not apply to equipment which has been repaired or altered in any way so as to affect its stability or durability, or which has been subject to misuse, negligence or accident. This Warranty does not cover equipment which has been impaired by severe weather conditions such as excessive wind, ice, storms, lightning, or other natural occurrences over which Holkirk Communications Ltd has no control, and this Warranty shall not apply to equipment which has been operated or installed other than in accordance with the instructions furnished by Holkirk Communications Ltd.

Claimants under this Warranty shall present their claims along with the defective equipment to Holkirk Communications Ltd immediately upon failure. Non-compliance with any part of this claim procedure may invalidate this warranty in whole or in part.

THIS WARRANTY IS EXPRESSLY IN LIEU OF ALL OTHER AGREEMENTS AND WARRANTIES, ANY IMPLIED WARRANTY OF MERCHANTABILITY OR FITNESS FOR A PARTICULAR PURPOSE IS LIMITED IN DURATION TO THE DURATION OF THIS WARRANTY. HOLKIRK COMMUNICATIONS LTD DOES NOT AUTHORISE ANY PERSON TO ASSUME FOR IT THE OBLIGATIONS CONTAINED IN THIS WARRANTY AND HOLKIRK COMMUNICATIONS LTD NEITHER ASSUMES NOR AUTHORISES ANY REPRESENTATIVE OR OTHER PERSON TO ASSUME FOR IT ANY OTHER LIABILITY IN CONNECTION WITH THE EQUIPMENT DELIVERED OR PROVIDED. IN NO EVENT SHALL HOLKIRK COMMUNICATIONS LTD BE LIABLE FOR ANY LOSS OF PROFITS, LOSS OF USE, INTERRUPTION OF BUSINESS, OR INDIRECT, SPECIAL OR CONSEQUENTIAL DAMAGES OF ANY KIND.

In no event shall Holkirk Communications Ltd be liable for damages in an amount greater than the purchase price of the equipment.

Holkirk Communications Ltd has the right to void the warranty when the antenna is installed by someone other than a certified installer.

Product Serial Number : .....

Date Purchased : .....

Holkirk Communications Ltd.  
Unit 17 Pulloxhill Business Park  
Greenfield Road  
Pulloxhill  
Bedfordshire  
MK45 5EU  
United Kingdom  
Tel : +44 (0)1525 721118  
Fax: +44 (0)1525 719734  
Email : info@holkirk.com



## 1. Overview – Technical Description

The VM120 is an azimuth over elevation positioning mount with motorised polarisation control.

All axis feature simple and very robust 24V DC motor drives giving reliable, low backlash, high and low speed motion controlled by either a jog controller or a fully auto-pointing controller.

The optical layout is a dual offset Gregorian antenna which naturally produces cross polarisation patterns which easily meet the 29-25 log theta requirement. The bearings are sealed for life items that allow for highly accurate motion but require no maintenance.

A manual over ride is provided for both azimuth and elevation axis to enable stowing the antenna due to power or other failure.

The RF power amplifier(s) can be fitted either directly onto the feed or securely fitted to the boom arm.

System weight (without the RF) is 80 kg.

## 2. Installation and Set-up

*The VM120 is fully tested with the controller prior to shipment. All position feedback, limit switches and motor speeds have been calibrated or set at the factory and require no adjustment.*

Remove the lid and end sections of the shipping crate, adjust forklift forks to roughly 1m apart or as wide as they will safely go if this cannot be achieved.

Once suitable brackets are available (see attached drawing) these should be fitted to the antenna roughly in the positions shown on the interface drawing with the slide nuts provided.

Slings or ropes capable of withstanding the weight of the antenna (80kg) should then be attached to the brackets, looped over the forks of the forklift and clamped onto the forks to prevent them slipping off.

Raise the antenna to clear the vehicle roof by a minimum of 0.5m and manoeuvre to the rear of the vehicle.

Whilst ensuring all cables are clear of mounting points, lower the positioner onto the vehicle roof and line up all mounting holes.

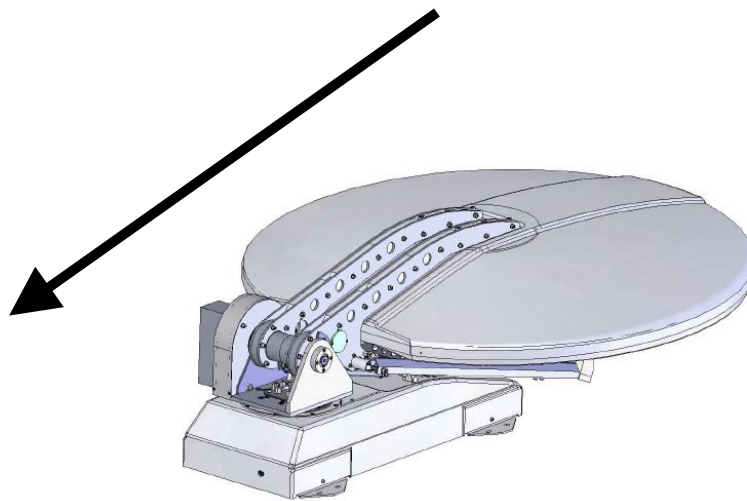
The antenna should be secured to the vehicle via the welded brackets to the VM120 framework on the sides of the antenna base framework. Suitable vehicle roof bars with clamping nuts (U-Bolts M6) must be used. Additional connections must be made connecting coax (Tx and Rx), control cable to controller and power cables.

The vehicle roof structure should be stiff enough to prevent no more than a 0.5 dB of TX gain loss in a 30mph gusting to 45mph wind.

Apply Loctite 242 or similar to all bolts and tighten to a torque of 13 – 15 Nm.

#### **Direction of vehicle travel.**

Antenna is to be fitted with the rear facing the direction of travel.



### 3. i-Point ACU Controller Installation

Install controller into electronics rack and attach control cable ensuring it is securely and fully pushed into its connector. (see Addendum 1)



*User Interface Unit (UIU)*

The antenna controller may be operated directly from the front panel of the User Interface Unit (UIU), a hand held controller or via a remote control link.

A Graphical User Interface (GUI) program is provided. This runs under Windows 2000 or Windows XP on any standard PC and communicates with the i-Point ACU via the remote control port on the front panel of the UIU.

A serial interface cable which connects from the UIU RJ11 connector to a standard 9 way female serial connector is provided with the UIU. This is wired to plug directly into a standard 9 way D-type serial port on a PC.

The UIU only implements direct user commands.

- It allows the operator to select the reference and target satellites from the existing list and to command Deploy.
- It allows the user to define the Final Pol and Final LNB settings following the deploy and also allows direct control commands such as Standby, Jog, Stow, Switch Pol or Switch LNB. A complete list is given below.

The UIU does not allow the user to change parameters or to add or modify data in the satellite database. These operations can be performed via the GUI.



A typical auto-pointing usage sequence would be:

Ensure that satellite channel data exists for a number of locally visible satellites including the required reference and, preferably, the target satellites. Data does not need to exist for the target, but, if it is available, it allows confirmation that the correct satellite has been acquired.

**Note** that if the UIU is to be used for selecting the Reference and Target satellites, then those satellites must appear in the first 10 slots of satellite data. Ensure that the reference and target satellites are as required and that the final Pol and final LNB settings match the settings required to access the satellite after acquisition.

Command **Deploy** (from the UIU or GUI).

For manual or JOG functions

Accessing JOG ANTENNA puts the system into manual jog mode and the Az and El axes can be jogged using the ^, v, > and < keys. Pressing enter again will toggle the mode between (Az & El jog) and (Polarisation axis jog (using > and < keys)). If the enter key is pressed while a ^, v, > or < key is already active then the speed will change to fast.

This is not a latching function and the speed will revert to slow as soon as the enter key is released. Clear will take the system back out of Jog mode.

#### 4. Maintenance

The antenna should be fully visually inspected at the point of installation and periodically thereafter at intervals of not more than 1 year. As the drives require no maintenance or adjustment this procedure simply involves ensuring there are no worn or damaged cables, that the waveguide is not damaged or perished and that all fasteners are present and tightened to the correct torque level.

#### 5. Spares and Replacement Parts

Since no maintenance is required, only electrical parts are recommended as spares. These parts will not fail from activity, but may fail from environmental exposure.



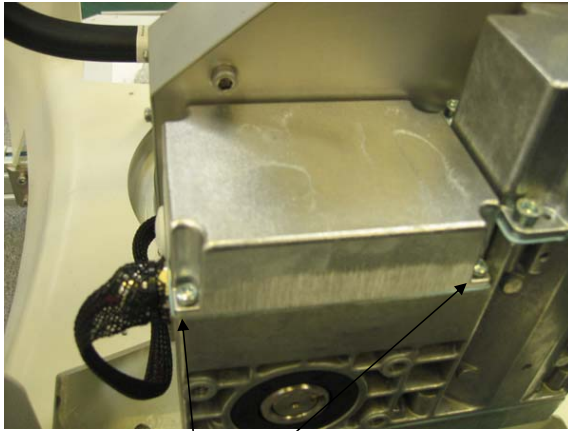
## 6. Manual Over Ride

### Azimuth



Insert hexagon key

### Elevation

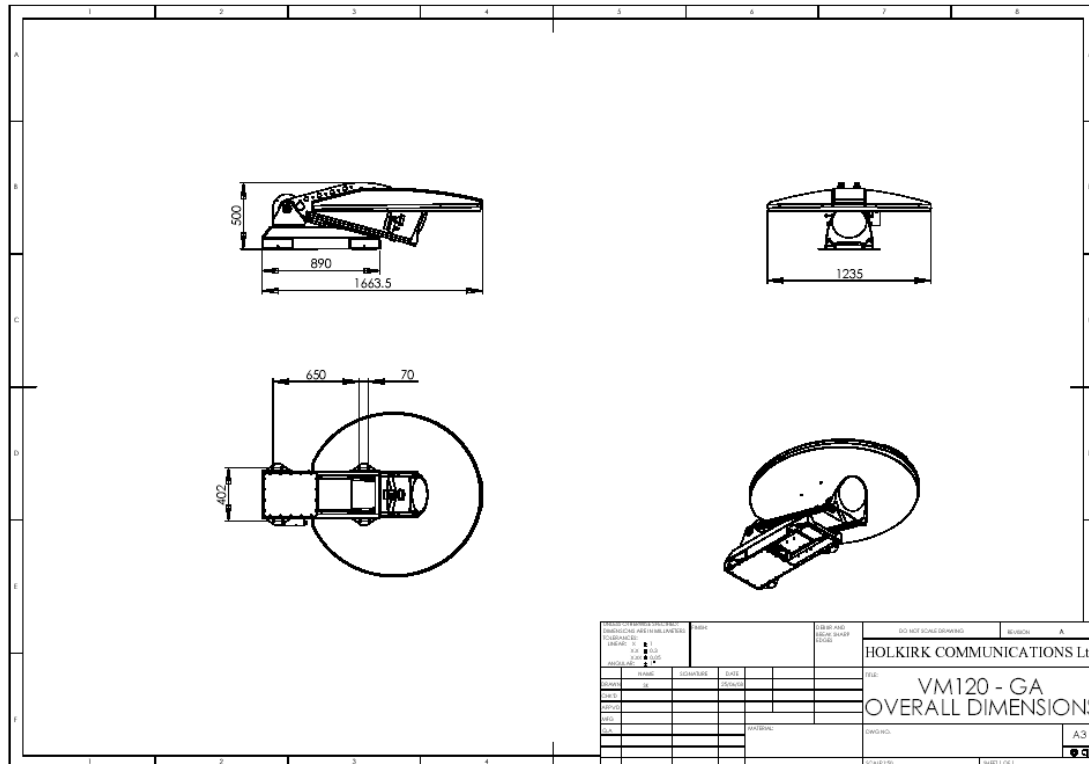


Ensure that the DC power to the unit is switched off, remove the 4 cover screws indicated, remove the cover then insert hexagon key into the shaft end.



## Installation Instructions VM120 Drive away Terminal Page 9 of 22

### 7. Overall Dimensions



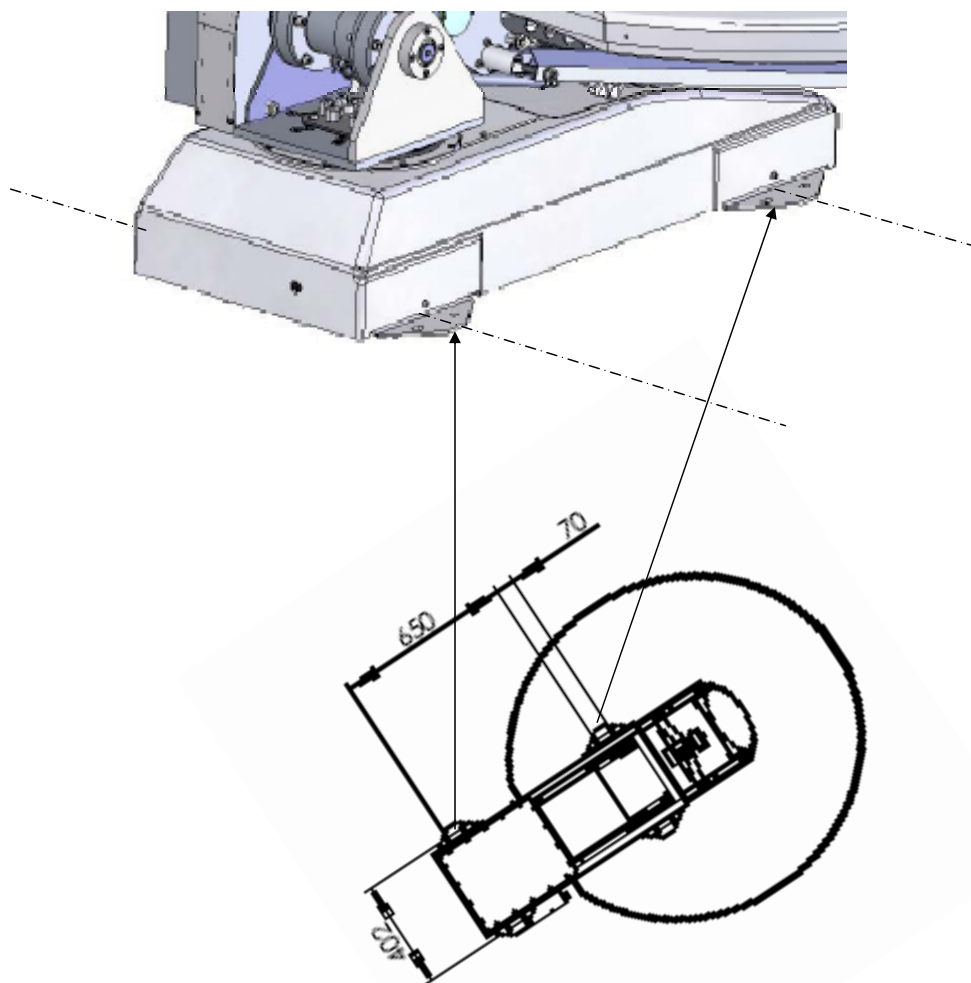
The distribution of this document is controlled by Holkirk Communications Ltd.

Print date 19/12/2008





## 8. Mounting Bracket Positions



The distribution of this document is controlled by Holkirk Communications Ltd.

Print date 19/12/2008



**Specification:-**

**Mechanical Data**

Overall dimensions :	1.66m x 1.25m x 0.450m
Geometry :	Gregorian offset, dual optic
Reflector material :	SMC
Feed interface :	WR 75
Azimuth range :	+/- 185°
Elevation range :	10~90°
Operating temperature :	-30°C ~ +60°C
Weight	95 kg (Depending on options)

**Electrical Data**

**Receive**

Polarisation :	linear
Frequency band :	10,7 ~12,75 GHz
3dB beam width :	1,3°
Gain @ 12,5 GHz :	41,8 dBi
G/T (30° elevation) @ 12.5 GHz :	21 dBK

**Transmit**

Polarisation :	linear orthogonal
Frequency band :	13,75 ~14,5 GHz
3dB beam width :	1,1°
Gain @ 14,25 GHz :	43 dBi
VSWR :	1,3 : 1 max
Isolation Rx / Tx (13,75~14,5 GHz) :	40 dB min
Isolation Tx / Rx (10,75~12,75GHz) :	75 dB min
Antenna approvals	Eutelsat/Intelsat compliant

**Power Requirements**

Unit requires a regulated 24vdc supply with a 10amp current rating as a minimum

---

## Addendum 1 - Idirect modem integration

Cables :-



Ref . 1 - Point controller to main loom



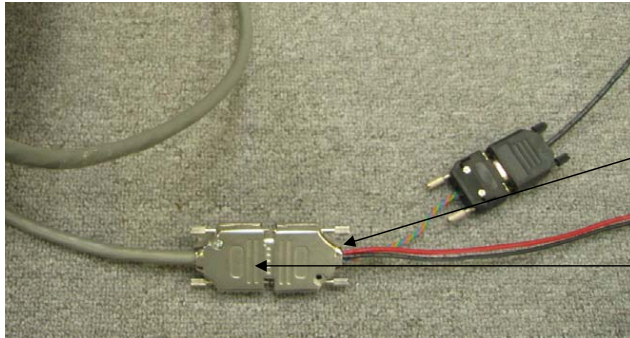
ref. 2 - Main loom



Ref. 3 - Router to i-Point connection cable



**Step 1 - Connect the main loom to the ACU**



DC Power D-Type

ACU cable (ref. 1)

Connect the power D-Type from the main loom to the grey ACU cable (ref. 1)

**Step 2 – Connect the ACU cable to the i-Point controller**





### Step 3 – Connect Tx and Rx cables

To gain access to the ACU interface you must apply power to the ACU and manually **JOG** the antenna in elevation. **Scroll down menu to select the JOG function**

#### FRONT PANEL CONTROL



#### Manual control keys

The Up/Down arrow keys are used mainly to navigate up or down the menu lists. In some menus they may be used to select the parameter values. In some menus the Left/Right arrow keys are used to select the parameter to modify. In most menus the Right key displays a short help message and the Left key reverts the display to the parameter value. enter key Used in menu mode to select the menu, or menu option, which is currently at the left of the top line and displayed in UPPER case.

**Clear key** Used to navigate backwards through the tree. In some cases this may take the user back to the top of the first tree (DEPLOY)

The display is a 2 line 24 character display. The positions of elements on the display are described in the descriptions below.

The unit powers up at the top of the main tree. The main tree entries are:

DEPLOY  
 STANDBY  
 STOW  
 SWITCH POL  
 SWITCH LNB  
 SATELLITE

TARGET  
 REFERENCE

**JOG ANTENNA** ←

USER SETUP

FINAL POL  
 FINAL LNB  
 ORIENTATION  
 LOCATION



## GPS OUTPUT

ALARMS  
 SYSTEM INFO  
 INSTALLER

SATELLITE T(able)  
 SATSCAN  
 SATSCAN SET  
 LNB TYPE  
 ACQUIRE MET(hod)

COMMISSION

ANTENNA  
 PARAMETER

The left hand main tree entries will be displayed on the left hand side of the screen with the current entry in UPPER case on the top row and the next entry in lower case on the second row. The ^ and v keys move through these entries.

To access an entry use ^ or v to make the entry UPPER case on the top row of screen and press enter. This will take you to the next level which may have one or several entries. Again the entries can be navigated using the ^ and v keys and entered using enter. When an entry has a number of possible values pressing enter repeatedly will cycle through the values. Pressing clear will move backwards through the tree and save any value that has been changed. In some cases clear will take you directly back to the top of the main tree.

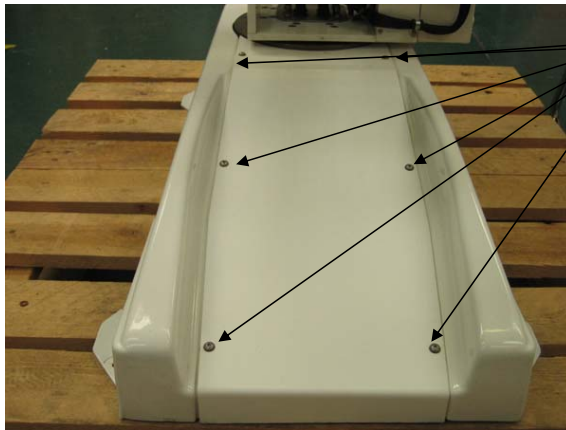
Accessing JOG ANTENNA on the UIU, puts the system into manual jog mode and the Az and El axes can be jogged using the ^, v, > and < keys. Pressing enter again will toggle the mode between (Az & El jog) and (Polarisation axis jog (using > and < keys)). If the enter key is pressed while a ^, v, > or < key is already active then the speed will change to fast.

This is not a latching function and the speed will revert to slow as soon as the enter key is released. Clear will take the system back out of Jog mode.

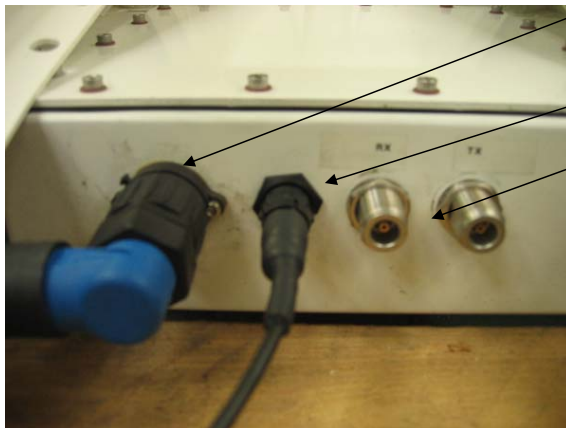


## Installation Instructions VM120 Drive away Terminal Page 16 of 22

Remove the access lid from the base of the VM120 and attach interface cables



Remove 6 screws



- Power connector form the main loom (ref.2) ( blue right angled connector)
- Comms connector form the main loom (ref.2)
- Connect Tx and RX cables to the N-Type interface
- Replace cover

Note : ensure the cables are positioned under the frame work to allow the cover to be re-fitted

## Step 4 – Connect the Idirect router



Using the 'Router to i-Point connection cable (ref. 3)'

- Connect the blue Ethernet cable into the console port of the Idirect router, connect the grey RG11 plug into the M&C port on the front of the i-Point ACU.
- Connect the Tx and Rx L-Band cables to the router



---

## Step 5 – Deploy the antenna

**This is currently set for a target or  $-30^\circ$  as the Reference and  $-27.5^\circ$  for the Target**

### Command **Deploy**

Ensure that satellite channel data exists for a number of locally visible satellites including the required reference and, preferably, the target satellites. Data does not need to exist for the target, but, if it is available, it allows confirmation that the correct satellite has been acquired.

**This is currently set for a target or  $-30^\circ$  as the Reference and  $-27.5^\circ$  for the Target**

**Note** that if the UIU is to be used for selecting the Reference and Target satellites, then those satellites must appear in the first 10 slots of satellite data. Ensure that the reference and target satellites are as required and that the final Pol and final LNB settings match the settings required to access the satellite after acquisition.

### Command **Deploy**



---

## Addendum 2

### i-Point Operation Monitoring

The i-Point Antenna control system is designed to be very simple to operate and is expected to be fully automatic in acquiring the required satellite signals.

However the system does not provide very much user feedback if the satellite acquisition operation does not complete.

This document is intended to provide method to gather information on the progress of the satellite acquisition.

### 1 Serial Communication

To communicate with the i-Point system a PC with a serial port is required. The information below described the use of hyper-terminal as a "terminal emulator", but any similar program could be used instead.

One unusual point about the serial interface is that the UIU front panel will keep trying to take control of the interface. When this happens you may see "garbage characters" generated. To reduce the effects of this type an extra "carriage return" every 10 seconds or so, The normal serial parameters are 19200,n,8,1 but mobile systems which connect the UIU to a DVBRCS modem are typically set to 4800,n,8,1. The Baud rate can be changed via the UIU front panel.

Press the buttons as follows:-

Down arrow \*6 Display Shows "User Setup"  
Enter Display Shows "Final Pol"  
down arrow \*4 Display Shows "GPS Output"  
Enter Display Shows "4800"  
Enter. Display Show "19200".  
Clear. Return to main menu.

This baud rate change is not stored. The next time the system is power cycled the baud rate will revert to normal operation.

The connection is taken from the RJ-11 front panel connector on the i-Point User Interface Unit. A cable can be supplied but connection details are shown below.

### RJ-11 TO 9-PIN D-Type Socket ADAPTER CABLE

To connect a PC to the UIU Front Panel M&C connector use this adapter cable. Adapter cables must be individually wired. Follow the pin out listed in table below.

The diagram shows the pin out for the RJ-11 connector, looking into the socket on the panel. This is a 6 pin version of the RJ-11 connector, sometimes known as an RJ-12



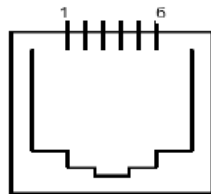
**D Connector Signal RJ-11 Connector**

Pin 1 Common Pin 5  
 Pin 2 Term Data IN Pin 3  
 Pin 3 Term Data OUT Pin 2  
 Pin 5 Ground Pin 1  
 Pin 6 Not Used Pin 4  
 Do Not Connect + 5VDC @ 100 mA Pin 6  
 Same table in RJ-11 order

**D Connector Signal RJ-11 Connector**

Pin 5 Ground Pin 1  
 Pin 3 Term Data OUT Pin 2  
 Pin 2 Term Data IN Pin 3  
 Pin 6 Not Used Pin 4  
 Pin 1 Common Pin 5  
 Do Not Connect + 5VDC @ 100 mA Pin 6

View of socket



This diagram shows the pin order when viewed from plug cable entry.

## 2 Normal Operation

The i-Point's normal "deploy" operation is made up of several stages. There is information provided at some stages which can be helpful to diagnose a system having problems.

First start to capture the information on the serial port. (In hyper-terminal use the "Transfer\Capture text" menu and provide a filename.) If you need assistance interpreting the information then it can be e-mailed to [support.europe@advantechamt.com](mailto:support.europe@advantechamt.com).

Then type the command "debugport 0". This will instruct the system to provide additional diagnostic data.

Then type the command "deploy".

### 2.1 Unstow

No useful information about this step. The antenna is driven from the current position to the "unstow" position.





## 2.2 Orientation

During this step 3 pieces of information are gathered.

1. The GPS is read to get the current location on earth.
2. The magnetometer is read to get a heading angle for the platform. This is the geographical direction that the antenna is pointing at the unstow position.
3. Then the antenna is driven to an elevation angle above the geostationary arc to take a "noise floor" measurement.

Once this drive has been completed the GPS and the magnetometer readings can be checked. To see the gps data type the command "gps". Check that the last line indicates that the signal is valid. To check the magnetometer heading information type "platform". The third number is the heading angle in degrees.

This number could be as much as +/- 20 degrees from the correct reading without stopping the system working. If the error is greater than 20 degrees then this can cause problems. If required the correct heading can be provided.

Type the command "platform 0 0 zz" where zz is the correct heading in degrees.

## 2.3 Satellite Sweep

The start of the satellite sweep is shown in the diagnostic data. During this stage the antenna elevation and Pol angles are set to the correct angles for the reference satellite and a range of azimuth movement is swept looking for an RF signal. If during this phase a message is seen reporting a "horizon scan" has been started then this indicates that no RF signal above the noise floor was detected during the sweep. This is an indication that there is a problem with the LNB of L-band cabling from the LNB to the i-Point ACU.

## 2.4 Peak on reference satellite

No diagnostic data is provided for this stage but the "cross scan" movements of the antenna can be seen.

## 2.5 Identify reference satellite

At the beginning of this step the diagnostic data reports "Looking at ww" where ww is the longitude of the reference satellite.

At the end of this stage there is a line of information which starts "CTRL" first number indicates the satellite longitude being checked. The last number is the number of DVB channels checked. The second to last number is the number of channels successfully decoded. The success number should be more than half of the number of channels checked. If less than half of the channels checked failed to be identified then the system will start to check channels from other satellites. Once it completes the list of satellites the system will report "walking the arc". This is an indication that it found an RF signal but was unable to identify it as any known satellite. In some cases the system will find a satellite which is not the reference satellite, but is one which it recognises when the channels are checked. If a satellite is recognised the system calculates a more accurate reading for the platform heading. It indicates the correction of the heading, before moving on to the next stage.



### **2.6 Goto target satellite**

No useful data is provided here.

### **2.7 Peak on target satellite**

No diagnostic data is provided for this stage but again the "cross scan" movements of the antenna can be seen.

### **2.8 Identify target satellites**

Repeat of the previous "identify reference satellite" step, this time for the target.  
At the beginning of this step the diagnostic data reports "Looking at ww" where ww is the longitude of the target satellite.

At the end of this stage there is a line of information which starts "CTRL" first number indicates the satellite longitude being checked. The last number is the number of DVB channels checked. The second to last number is the number of channels successfully decoded. The success number should be more than half of the number of channels checked. Again if the system peaks up on the wrong satellite, but it is recognised as such then the system will attempt to get to the target satellite again. If the satellite is recognised then the system will re-calculate the platform heading.

### **2.9 Set polarisation to final position.**

At this stage the Feed is moved to the final Pol position.

## **3 GUI Program**

The ipoint.exe program can be used to upload and download whole sets of configuration data and satellite data. The program only works when the i-Point serial port is set to 19200. (See Serial Communication) above.

### **UNITRONIX Pty Ltd**

PO Box 486, Morisset NSW 2264

**NSW:** Tel: 61 2 4977 3511 Fax: 61 2 4977 3522

**WA:** Tel: 61 8 9455 2424 Fax: 61 8 9455 2458

unitsyd@unitronix.com.au www.unitronix.com.au