

UNITRONIX Pty Ltd

PO Box 486, Morisset NSW 2264
 NSW: Tel: 61 2 4977 3511 Fax: 61 2 4977 3522
 WA: Tel: 61 8 9455 2424 Fax: 61 8 9455 2458
 unitsyd@unitronix.com.au www.unitronix.com.au

ARINC429 Resource Component

PBA.pro-ARINC429

The PBA.pro-ARINC429 component handles single or multiple ARINC429 resources providing access to all Transmitter, Receiver, Replay Channels and Chronological Bus Monitor with Databus Analyzer and supersedes the legacy PAA-429 Software.

The component is fully scriptable (using the optional PBA.pro-TSM component) and includes additional setup, control and visualization of onboard Discretes designed into AIM's latest generation ARINC429 test and simulation modules. The PBA.pro-ARINC429 resource functionality is accessed via the PBA.pro™ Resource Manager.



ARINC429

4	170d:16h:12m:23.426638s	2,880		A429	A429-Board1_Channel9	9	4	N/A	FA	None
5	170d:16h:12m:23.429518s	2,880		A429	A429-Board1_Channel9	9	255	N/A	DFDA	None
6	170d:16h:12m:23.432398s	2,880		A429	A429-Board1_Channel9	9	76	N/A	2D324F	None
7	170d:16h:12m:23.435278s	2,880		A429	A429-Board1_Channel9	9	22	N/A	3BB6B6	None
8	170d:16h:12m:23.438156s	2,878		A429	A429-Board1_Channel9	9	22	N/A	3BFBBB	None
9	170d:16h:12m:23.441036s	2,880		A429	A429-Board1_Channel9	9				

www.aim-online.com

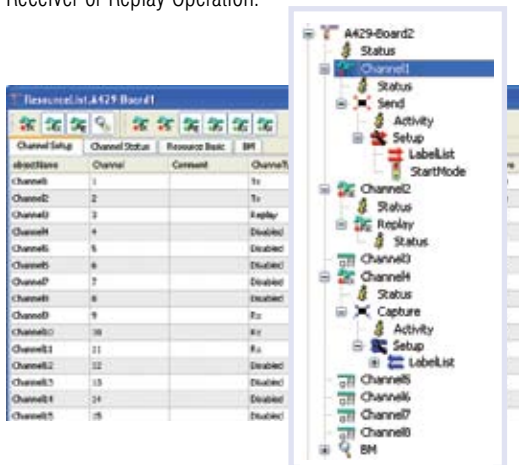
Avionics Databus Solutions

General Board & Status Information

The PBA.pro-ARINC429 Resource Overview offers visualization and control of resource/ board level information. Programmable ARINC429 channels can be configured for Transmitter, Receiver or Replay Operation.



PBA.pro™ a modular, scalable and integrated approach for a broad range of avionics and more applications.



Receiver

The Receiver channel nodes provide Receiver set-up with displays and control of multiple ARINC429 Receive channels.

- Support for low and high channel speeds
- Parity modes (parity bit can be used for data)
- Selection of Receive labels with full support of SDI
- Error Detection
- Label activity displays



- Loop/ Pollution mode: all or selected labels of a Receive channel can be looped to another Transmit channel for retransmission with the possibility to modify (pollute) label contents

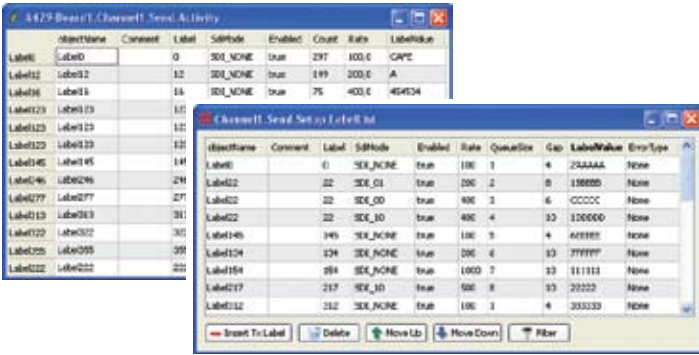


AIM-USA

Transmitter

The Transmitter channel nodes provide Transmitter set-up with displays and control of multiple ARINC429 Transmit channels.

- Support for low and high channel speeds
- Parity modes (parity bit can be used for data)
- Generation of cyclic or acyclic label transfers with full support of SDI
- Queues with fill functions for dynamic label data generation
- Variable Gap size
- Error Injection
- Automatic creation of framing according to specified label rates
- Cyclic or loop count based execution of framing
- Label activity displays
- Loop/ Pollution mode (forced by Receive channel)



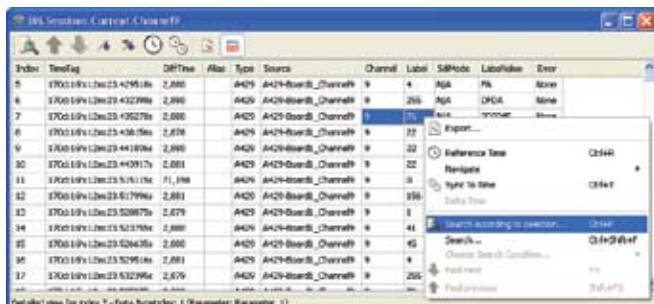
Replay

The channel type - Replay - supports replay of previously recorded ARINC429 recording files physically to the bus. Multiple ARINC429 channels can be selected for synchronous replay across channels.

Chronological Bus Monitor

The Bus Monitor node provides access to all Bus Monitor related functions:

- Tabular session file for each individual receiver channel with search, filter, merge, data export options and customizable column ordering
- Detailed message display with 'stack-walk' controls and displays of all message attributes
- Event marker generation and correlation with stack display
- Filter library for definition and handling of conditions applied to captured messages for online (stream scanner) and offline (post analysis) operations
- Alias definition for resolving label transfer attributes
- Alias definition for resolving transaction attributes
- Label filter on H/W basis with full support of SDI



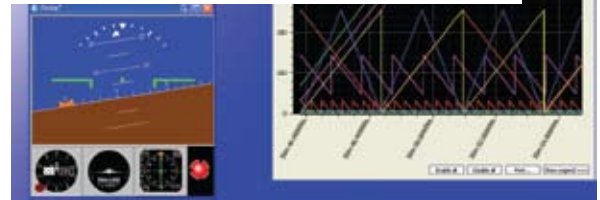
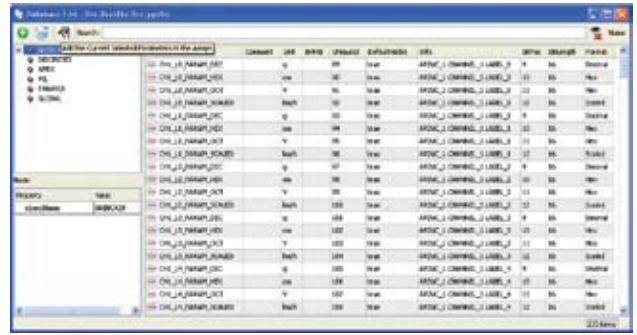
Discretes (for AIM cards with onboard Discrete I/O's)

The Discretes node provides setup and control functions for onboard Discrete I/O's including a chronological bus monitor.

Database Manager (using optional PBA.pro-ARINC429-DBM component)

The ARINC429 Database Manager component provides Engineering Unit Conversion and several extensions:

- Display Tx or Rx related parameters on resource node
- Parameter information added to individual messages in the chronological bus monitor
- Assign displays to show dedicated properties of an object or parameters with options to check and control parameter values
- Export of parameters for offline analysis via **PBA.pro™** (tabular and graphically) or third party tools
- Import of **ParaView** Databases (.pdi format) supported
- Compatible database with engineering unit definition of ARINC429 standard labels and equipment ID's
- Full support of SDI and SSM



Ordering Information

- PBA.pro-ARINC429-4** ARINC429 Low Level 1st 4 Channels
- PBA.pro-ARINC429-8** ARINC429 Low Level 1st 8 Channels
- PBA.pro-ARINC429-16** ARINC429 Low Level 1st 16 Channels
- PBA.pro-ARINC429-32** ARINC429 Low Level 1st 32 Channels
- PBA.pro-ARINC429-X8** ARINC429 Low Level Additional 8 Channels
- PBA.pro-ARINC429-DBM** Data Base Manager, Required for Engineering Unit Conversion

AIM Office Contacts:

AIM-USA
 Seven Neshaminy Interplex
 Suite 211 Trevose PA 19053 USA
 Tel: 267-982-2600
 Toll Free: 877-520-1553
 Fax: 215-645-1580
 email: salesusa@aim-online.com

AIM GmbH
 Sasbacher Str.2
 79111 Freiburg
 Germany
 Tel: +49 761 45 22 90
 Fax: +49 761 45 22 93 3
 email: sales@aim-online.com