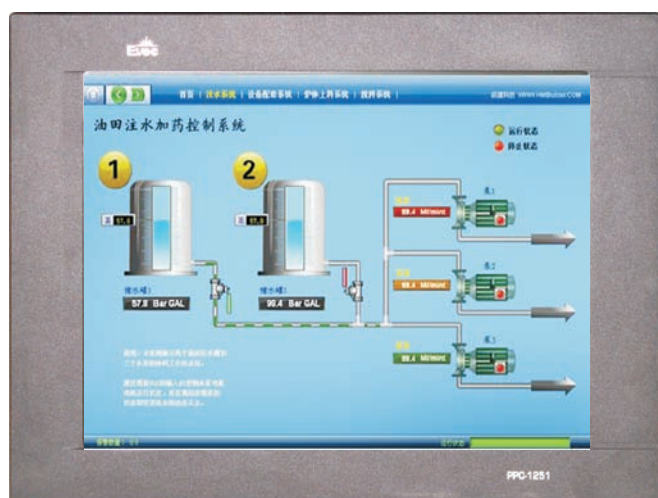


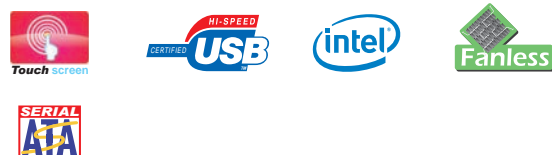
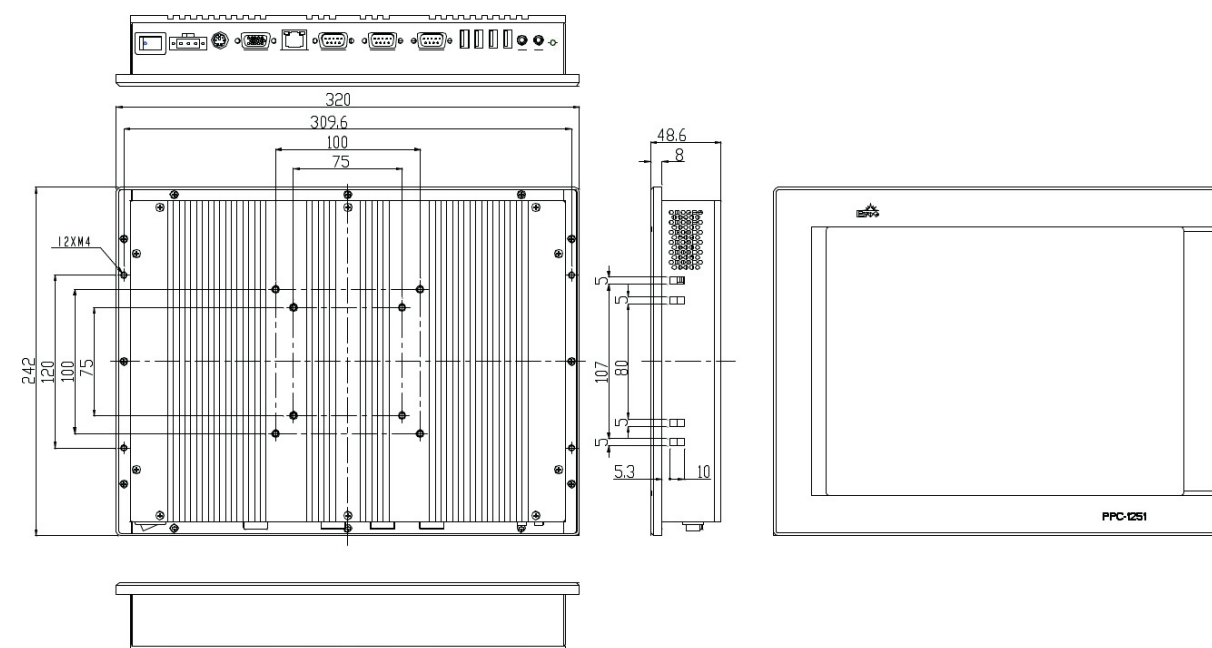
# PPC-1251|PPC-1252

12" Extra-thin Fanless Panel PC with VGA/LAN/Audio/4USB/3COM

NEW



## Dimensions



## Features

- 12" Extra-thin Fanless Panel PC
- Intel® Celeron® M 600MHz processor
- 1GB DDRII in standard configuration, up to 2GB
- Supports 4×USB2.0, 3×COM, 1×VGA, 1×LAN, 1×Audio, 1×PS/2 port (KB/MS)

## Specifications

### Display Features

|                 |   |
|-----------------|---|
| Display Screen  | 12.1" Color TFT LCD   |
| Display Chipset | Intel® 910GML/915GM integrated graphics acceleration controller |
| Resolution      | 800 x 600   |
| Brightness      | 450cd/m2  |
| Contrast ratio  | ≥350:1  |

### System

|                     |  |
|---------------------|--|
| SBC Model           | ETX-1712CLDNA  |
| Processor           | Onboard Intel® Celeron® M 600MHz processor                         |
| Chipset             | Intel® 910GML/915GM+ICH6M  |
| Memory              | 1GB DDRII in standard configuration, up to 2GB                     |
| Hardware Monitor    | CPU temperature monitor, voltage monitor, and watchdog timer, etc. |
| Watchdog Timer      | 1~255 sec./min. timer system reset/interrupt, setup by software    |
| Expansion Interface | N/A  |
| Storage             | 2.5" 160G SATA HDD in standard configuration; support CF Type II   |

### Ethernet

|           |               |
|-----------|---------------|
| Chipset   | Intel®82562ET |
| Speed     | 10/100Mbps    |
| Connector | 1 x RJ45      |

### I/O Interface

|             |   |
|-------------|---|
| USB         | 4 x USB2.0 Ports  |
| Serial Port | 3 x RS232   |
| KB/MS       | 1 x PS/2 port (KB/MS)   |
| VGA         | 1 x VGA port  |
| Audio       | AC'97, available interface of Speaker-out, Mic-in on the rear panel |

### Mechanical and Environmental

|                       |                                  |
|-----------------------|----------------------------------|
| Dimensions            | 320mm (L) x 242mm (W) x 49mm (H) |
| Weight                | 4.4Kg/6.2Kg                      |
| IP Level(front panel) | IP65(optional)                   |
| Reliability           | MTBF≥50000h; MTTR≤0.5h           |
| Safety                | GB4943                           |
| Operating Temperature | 0°C~50°C                         |
| Storage Temperature   | -20°C~60°C                       |
| Operating Humidity    | 10%~95%, non-condensing          |

### Power

|                   |   |
|-------------------|---|
| Power Supply      | Power Adapter(Input Voltage/Frequency: 100 ~ 240V AC 50Hz/60Hz) |
| Power consumption | 96W(Max)  |

### Operating System

|             |  |
|-------------|--|
| Windows OS  | Windows 98SE/ Windows 2000/ Windows XP |
| Embedded OS | Linux/XP Embedded/WinCE                |

### Test

|           |  |
|-----------|--|
| Vibration | 5-17Hz/1.0mm amplitude, 17-200Hz/1.0g acceleration |
| Shock     | 10g peak acceleration(11ms duration)               |
| EMC/EMI   | GB9254-1998 class A                                |

## Optional Accessories

| Part Number | Name                           | Description                                | Qty. |
|-------------|--------------------------------|--|------|
| 2192-011341 | Driver CD/Protective film/RoHS | PPC-1251 SERIES/VER:C01                    | 1    |
| 2100-054001 | Power Adapter /RoHS            | 96W/FSP096-AHB/ 12Voutput/cheese head 4PIN | 1    |

## Ordering Information

| Part Number | Model Number                      | Description   |
|-------------|-----------------------------------|---|
| 0010-025960 | PPC-1251-0101/<br>touch screen    | 12.1"LCD/Intel®CM 600M/1GB DDR2 memory/160G SATA hard disk/1 x VGA port/1 x 10/100Mbps LAN port/4 x USB2.0 port/3 x RS-232/1 x PS/2 port/one set of Audio ports/Single 12V DC power supply, with power adapter/aluminium alloy front panel/with touch screen    |
| 0010-025970 | PPC-1251-0102/<br>toughened glass | 12.1"LCD/Intel®CM 600M/1GB DDR2 memory/160G SATA hard disk/1 x VGA port/1 x 10/100Mbps LAN port/4 x USB2.0 port/3 x RS-232/1 x PS/2 port/one set of Audio ports/Single 12V DC power supply, with power adapter/aluminium alloy front panel                      |
| 0010-029181 | PPC-1252-0101/<br>touch screen    | 12.1"LCD/Intel®CM 600M/1GB DDR2 memory/160G SATA hard disk/1 x VGA port/1 x 10/100Mbps LAN port/4 x USB2.0 port/3 x RS-232/1 x PS/2 port/one set of Audio ports/Single 12V DC power supply, with power adapter/ metal plate-made front panel /with touch screen |
| 0010-029191 | PPC-1252-0102/<br>toughened glass | 12.1"LCD/Intel®CM 600M/1GB DDR2 memory/160G SATA hard disk/1 x VGA port/1 x 10/100Mbps LAN port/4 x USB2.0 port/3 x RS-232/1 x PS/2 port/one set of Audio ports/Single 12V DC power supply, with power adapter/ metal plate-made front panel                    |