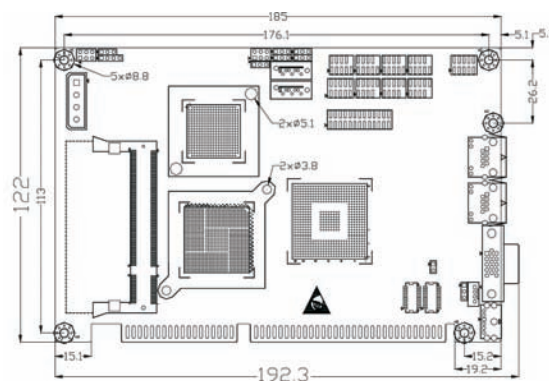
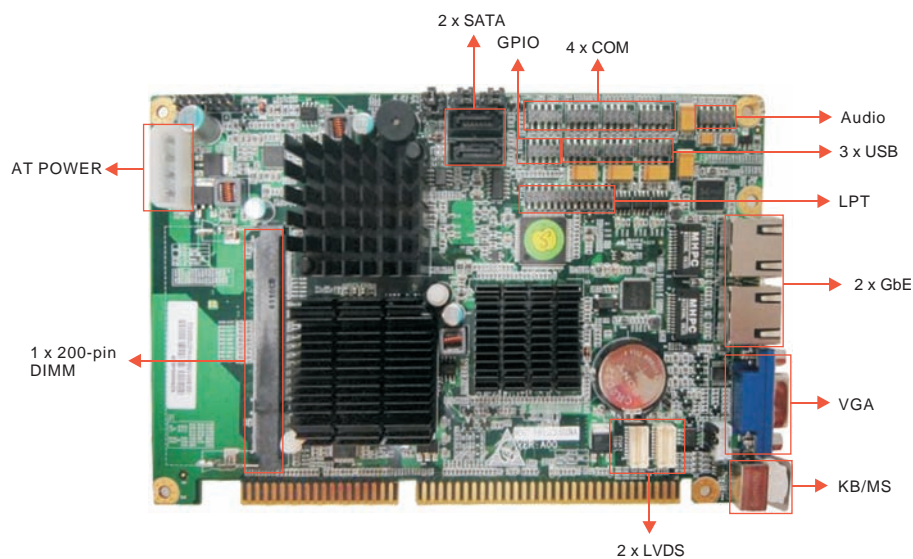


HSC-1812CLD2NA

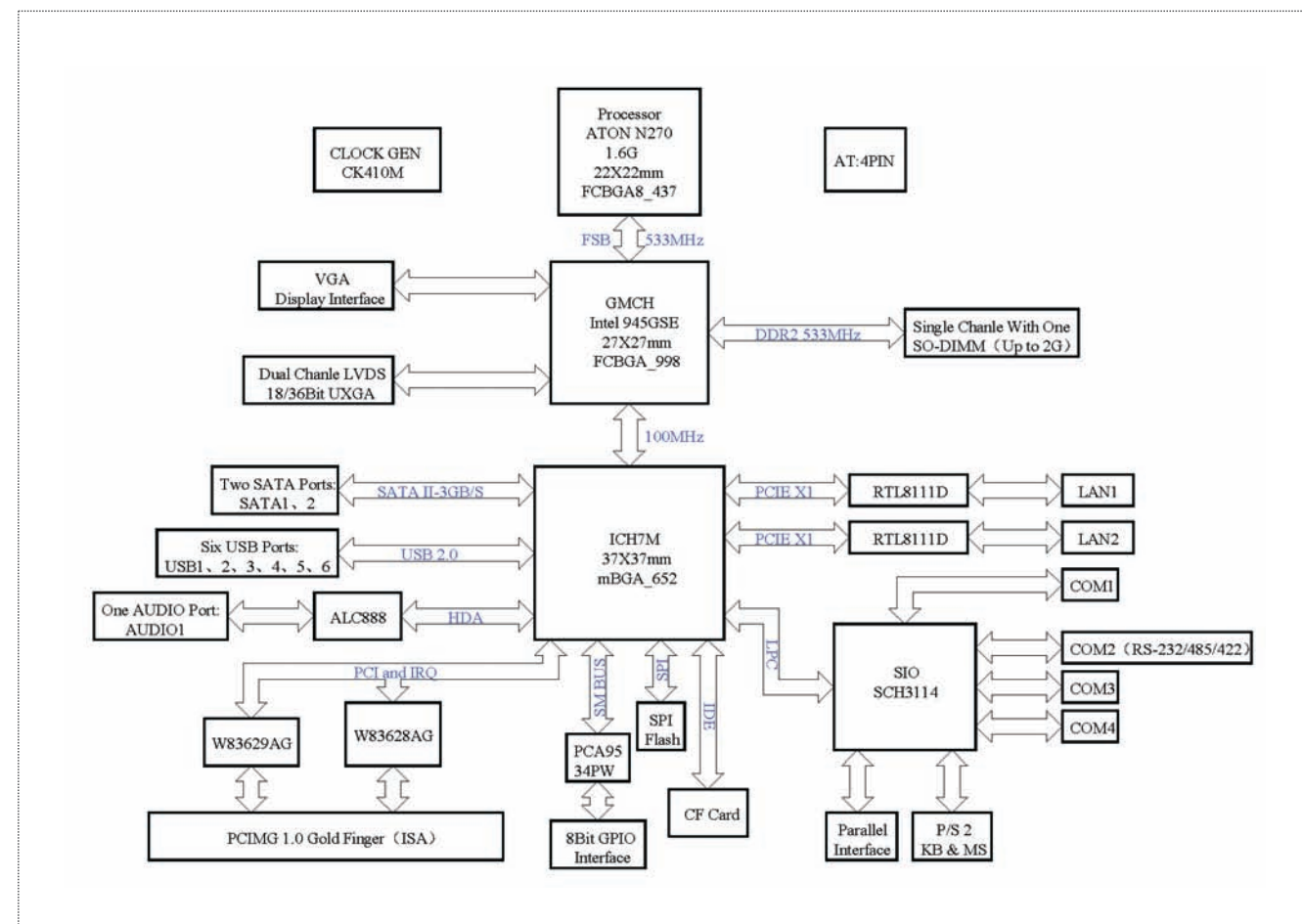
Half-Size PICMG1.0 Atom™ N270 CPU Card with VGA/LVDS/CF/2GbE/Audio

UNITRONIX Pty Ltd

PO Box 486, Morisset NSW 2264
 NSW: Tel: 61 2 4977 3511 Fax: 61 2 4977 3522
 WA: Tel: 61 8 9455 2424 Fax: 61 8 9455 2458
 unitsyd@unitronix.com.au www.unitronix.com.au



Board Diagram



1
PICMG



Features

- PICMG1.0 Half-Size CPU Card
- Onboard Intel® Atom™ N270 processor
- Support 1 x 200-pin SODIMM, up to 2GB DDR2 400/533
- Support up to 2 x 10/100/1000Mbps Ethernet interface
- Supports VGA and dual-channel 18-bit LVDS
- Support 1 x CF, 6 x USB2.0, 1 x LPT, 4 x COM, 8 x GPIO

2
EPIC/EBX /xTX

Specifications

System	
Processor	Onboard Intel® Atom™ N270 1.6GHz processor, FSB 533
Chipset	Intel® 945GSE + ICH7M
Memory	Supports 1 x 200-pin SODIMM, up to 2GB DDR2 400/533
Hardware Monitor	Monitors system status, voltage, temperature and fan speed
Watchdog Timer	1~255 sec./min. timer system reset or interrupt, setup by software
Expansion Interface	PICMG 1.0 (ISA only)
Storage	
IDE	N/A
Serial ATA	2 x Serial ATA 300MB/s interface
Floppy	N/A
CF	1 x CF II
DOC/DOM	N/A
I/O Interface	
USB	6 x USB2.0 Ports, available header on board
Serial Port	3 x RS-232, available header on board
	1 x RS-232/422/485, available header on board
Parallel Port	1 x LPT
IrDA	N/A
GPIO	8 x GPIO
Audio	Supports HDA, available interface of Speak-out, Line-in and Mic-in

Display	
Display Controller	Intel 945GSE integrated graphics controller, supports DVM 3.0
Memory	Supports 1 x VGA and dual-channel 18-bit LVDS
Resolution	VGA mode up to 1920 x 1200 @ 75Hz LVDS mode up to 1600 x 1200 @ 75Hz
Dual Display	VGA+LVDS and LVDS+LVDS
Ethernet	
Chipset	MAX. 2 x RTL8111D
Speed	10/100/1000Mbps
Connector	MAX. 2 x RJ45
Mechanical and Environmental	
Dimensions (L*W*H)	192.3mm x 122mm x 36mm (with heat sink)
Operating Temperature	0°C ~ 60°C
Storage Temperature	-40°C ~ 80°C
Operating Humidity	5%~90%, non-condensing
Power	
Power Supply	Supports AT power supply
Power Consumption	Onboard Atom™ N270 and 2GB DDR2 667 AT : 5V @ 1.0A and 12V @ 0.33A
Operating System	
Windows OS	Windows 2000/windows XP/Linux 2.6

Optional Accessories

Part Number	Name	Description	Qty.
2360-014781	USB Cable/ROHS	2*5Pin (2.0 pitch) to USB with bracket L=550/A1	1
2360-005031	KM Cable /ROHS	minDIN 1-to-2 PS2 keyboard/mouse cable L=250	1
2360-018011	SATACable /ROHS	SATA-7P cable /2725/L=300mm	1
2360-002581	AV Cable /ROHS	2*5(female)(2.0 pitch) 3AUDIO cable with bracket/L=300	1
2360-011221	LPT Cable /ROHS	2*13(2.0) to DB25 without bracket/L=300	1
2360-028731	COM Cable /ROHS	2*5(2.0 pitch) to DB9(male) with bracket/UL2651/300	1
2192-011411	Driver CD/ROHS	HSC-1812	1

Ordering Information

Part Number	Model Number	Description
0030-015561	HSC-1812CLD2NA	PICMG1.0 ISA-bus half-size CPU card /onboard N270/1 x SO-DIMM /1 x VGA, 1 x LVDS/2 x SATA, 1 x CF /2 x 1000M /6 x USB/3 x RS232, 1 x RS232/422/485/1 x LPT/1 x PS/2/HDA audio card/8 x GPIO/
0030-015571	HSC-1812CLD1NA	PICMG1.0 ISA-bus half-size CPU card /onboard N270 /1 x SO-DIMM /1 x VGA, 1 x LVDS/2 x SATA, 1 x CF /1 x 1000M /6 x USB/3 x RS232, 1 x RS232/422/485/1 x LPT/1 x PS/2/HDA audio card/8 x GPIO

1
PICMG

2
EPIC/EBX /xTX

3
BoxPC

4
HMI